

Molloy University

DigitalCommons@Molloy

Communication Sciences and Disorders
Newsletter

Communication Sciences and Disorders

Spring 2014

Let's Talk Speech! Volume 7 Issue 1

Barbara T. Schmidt Ph.D.

Molloy College, bschmidt@molloy.edu

Follow this and additional works at: https://digitalcommons.molloy.edu/csd_news



Part of the [Speech Pathology and Audiology Commons](#)

[DigitalCommons@Molloy Feedback](#)

Recommended Citation

Schmidt, Barbara T. Ph.D., "Let's Talk Speech! Volume 7 Issue 1" (2014). *Communication Sciences and Disorders Newsletter*. 5.

https://digitalcommons.molloy.edu/csd_news/5

This Newsletter is brought to you for free and open access by the Communication Sciences and Disorders at DigitalCommons@Molloy. It has been accepted for inclusion in Communication Sciences and Disorders Newsletter by an authorized administrator of DigitalCommons@Molloy. For permissions, please contact the author(s) at the email addresses listed above. If there are no email addresses listed or for more information, please contact tochter@molloy.edu.

A Message from Dr. Barbara Schmidt



Spring 2014

Volume 7 Issue 1

SPEECH-LANGUAGE PATHOLOGY

MOLLOY COLLEGE

The 2013-2014 academic year has been filled with memorable events. As you read, I think you will get a sense of how our department has grown and how many things we are grateful for.

First, this academic year brought us 20 new graduate students to add to the 19 we already had. Students coming from approximately 16 different undergraduate programs have filled the halls with activity. The clinical educators, faculty and staff welcomed all of them and have enjoyed working with them. We will be reluctant to see our 2nd year students leave us in May, but we look forward to hearing of their professional accomplishments in the future. Likewise, our undergraduate seniors have a variety of goals following graduation. Some of them will be pursuing a career in speech language pathology, while others will move into education, special education and business.

Second, we welcomed a new faculty member to the department this year. Dr. Sandy White, a past president of the Long Island Speech, Language and Hearing Association was a practicing speech-language pathologist for many years in the Long Island public school system before joining us here at Molloy.

Thirdly, I am pleased to report that we were once again awarded the "College of Excellence Award 2013" by Autism Speaks. This is the second consecutive year we have received this recognition and I am proud of "team Molloy" under the leadership of Professor Alimonti!

2013-14 will be hard to forget. Clearly, we have NEVER had so many snow days. It seemed that every Monday we braced ourselves for another closing. Despite this disruption, students and faculty pulled together, attended makeup classes, and made the best of it.

Although we had numerous snow days and struggled to make up classes, that did not stop the SLP Graduate Admissions Committee from reviewing the almost 300 applications that were processed in February and March 2014. Potential graduate students traveled from as far away as California to meet and discuss our program.

Clearly, we are grateful for another wonderful year. As you read this newsletter I hope that it triggers fond memories of your association with Molloy College and I look forward to creating many more with students, faculty and staff.

Award Received from Autism Speaks

Molloy College was recognized by **Autism Speaks** for the **second consecutive year** with the **College of Excellence Award for 2013**. This recognition is a tribute to the effort exerted by all the team members of Molloy College. Special recognition goes to our team leader, **Susan Alimonti**, Speech Center Director. The students, staff and faculty of the speech-language pathology program have been participating in the autism walk since the 1990's. However for the past several years **Susan Alimonti**, Speech Center Director has been our team leader, organizing students and activities for the children who are present at the walk. In 2013, undergraduate and graduate students worked together to achieve this goal. Congratulations everyone!



SPEECH -LANGUAGE PATHOLOGY

Cocktail Party Helps to Fund “Rising Star Scholarship”

On October 10, 2013 the Speech–Language Pathology Department hosted a party to raise funds for the **Rising Star Speech-Language Pathology Scholarship**. Students, faculty, alums and friends joined together in celebration. **Liz Gardner**, the administrative assistant for the Speech-Language Pathology Department, most capably planned a wonderful party.

The members of NSSLHA organized raffles for the event. They did an **OUTSTANDING** job in gathering contributions for the raffles and selling tickets. A special thank you to **Lauren Kiraly, Nicolette Sinagra, Gabriella Arcabascio, Sarah Quinn, Jen Martin** and **Julie Pretter** for all of their hard work!

Thanks to the generous donations and the raffles the party raised over \$3,000.00 Fund raising efforts will be ongoing in the hopes that the fund will

grow and therefore be able to provide a token of recognition to a deserving student for many years to come. We hope to see you at our next event!

Send donations to:

Rising Star Scholarship
Speech-Language Pathology Department
1000 Hempstead Avenue
P.O. Box 5002, W107
Rockville Centre, NY 11571-5002



Clinical Educators

We are pleased to announce that several new Clinical Educators joined the Speech-Language Pathology Department for the 2013-14 academic year. Please join me in welcoming **Rovena Marcus** and **Laura Quinn Sullivan**. We are very fortunate to have these 2 experienced clinicians join our department.

Clinical Educator in the Limelight

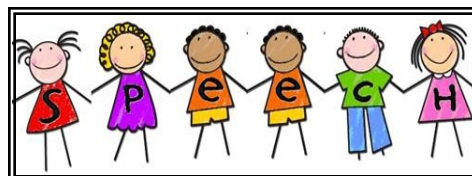
Jessebell Reyes-Cocuzzo joined the department as a clinical educator in the fall 2011 semester. Professor Reyes-Cocuzzo earned her M.S. degree in Speech-Language Pathology at New York Medical College, Valhalla and completed the Bilingual Extension at Teachers College Columbia University. Her clinical career has included 9 years working in early intervention with Marion K. Salomon & Associates and 4 years working on Crossroads School for Child Development. She is a Level I PROMPT-trained therapist in addition to having extensive training in behavioral therapeutic techniques and feeding. As a bilingual clinician she recognizes the need for students to be prepared to meet varied clinical challenges with a diverse population.

Spotlight on a Senior



Nicolette Sinagra came to Molloy College as a freshman and was initially an undeclared major. She has played on the softball team while at Molloy. Between softball and academics, Nicolette has been extremely busy, but has enjoyed every minute. Declaring the speech-language pathology major in sophomore year, Nicolette was influenced by her exposure to a speech-language pathologist. She thinks that one of the most important features of the College is that it offers undergraduate majors a clinical and a research experience.

Nicolette believes that doing clinical practicum in the Molloy College Speech, Language and Hearing Center has been a valuable experience that has built her confidence and better prepared her for graduate education. Nicolette will be attending a graduate program in the NY metropolitan area.



Ready, Set, Go... By Dianna Geneva (BS'11, MS '13)

Graduate with a Master's degree in Speech-Language Pathology, embark on an exciting career, move somewhere new and exciting, and marry a knight in shining armor. If I was asked a few years ago what I hoped my future would hold, that would've been my response. Apparently, fulfilling those dreams was destined for me. Unbeknownst to me, destined to happen all within a year.

In May of 2013 I graduated Molloy College with my Master's in Speech-Language Pathology. It was an exciting time for myself, my graduating cohorts, and the SLP faculty at Molloy College (being that it was the first year Molloy College graduated students with this degree).

The summer came and went quickly. I packed up everything I owned and moved to Washington State. My now husband, Shane is in the military and duty called (a long distance call for a girl born and raised on Long Island). Adjusting was and is at times still challenging, but luckily I have selfless husband, adorable puppy, and a fantastic career.

I began my CF in September working for EBS Healthcare as an elementary school speech-language pathologist. The school district I work in, Bethel, is comprised of 9 preschools, 17 elementary schools, 6 middle schools, and 4 high schools. The nice thing about working in a large district is that I was



instantly surrounded by other SLPs (half of whom being first years like myself, while the other half were seasoned veterans). With such a large district, I bet you're wondering about my caseload. 25. Yes, 25. Bethel School District has made a shift from the traditional "caseload" service delivery model to the "workload" service delivery model. Caseload numbers are low, providing SLP's more time to consult and service more children. This has been made possible by speech and language services to align with the theory and three-tiered framework of Response to Intervention (RtI). With this workload model I am able to run articulation and language groups for students not on my caseload, and get involved with students

During classroom lessons and reading

intervention.

Just last month I was part of a team of 5 SLPs who went in front of administration to propose a change to the current preschool framework. Our ideas were well received and we were approved to start piloting our proposal. It has been great working with a district that values the opinions and ideas of the employees. My CF will be finished in June and I look forward to what the future holds!

Graduated, moved, employed. Now, as for that knight in shining armor, I married him on December 27, 2013 on Long Island. Planning a wedding while across the country was challenging, but luckily I had family and friends in NY who were willing to help. When the big day came, all the stress seemed worth it. Shane and I celebrated all night with family, friends and even some of my former Molloy College classmates were able to make it! Currently, I am enjoying married-life and looking forward to a Hawaiian honeymoon this summer.

After reflecting on twenty-thirteen I am left with these two thoughts:

2013, how did I survive you?

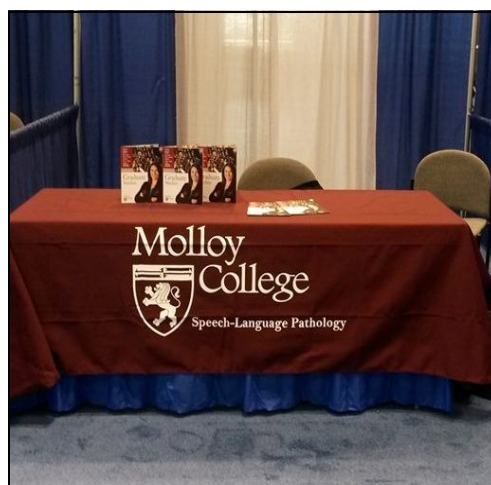
2014, you have a lot to live up to.

ASHA Convention 2013

The American Speech Language and Hearing Association (ASHA) held their annual meeting in November.

Four Molloy students, **Dr. Schmidt**, **Prof. Susan Alimonti**, **Prof. Fran Morr** and **Dr. Nancy McGarr** traveled to Chicago in November 2013 to attend the annual meeting of the American Speech-Language and Hearing Association. They students and faculty attended workshops on swallowing, language and informative technical sessions. Additionally, the students attended NSSLHA events, where they met students from across the United States.

The department recruited graduate students at the student fair, where faculty were able to meet with students from all over the country.



While at ASHA, **Dr. Schmidt** and **Danielle Mosca** (M.S.'13) presented, "English Language Learners: Speech-Language Pathologist's View and Knowledge Base," a pilot study examining issues relevant to evaluation and treatment of English Language Learners.

Dr. Nancy McGarr, **Danielle Mosca** (M.S.'13), **Jaqui Polara** (M.S.'13), **Dianna Geneva** (M.S.'13), **Brenda Stone** (M.S.'13), **Kristi Waldvogel** (M.S.'13), **Nicole Dobranski** (M.S.'13) and **Elizabeth Bernhardt** (M.S.'13), **Dr. Rebekah Buccheri**, presented "Clear Speech Production: How Teachers of the Deaf Enhance Speech for Better Perception & Production," exploring communication learning strategies for the deaf.

Next year Orlando! Are you coming?

NSSLHA By: Lauren Kiraly

Each academic year, the NSSLHA chapter at Molloy College is filled with active students determined to get involved on campus and learn more about Speech-Language Pathology. In 2013-2014, NSSLHA took a very active role on campus, fundraising for various organizations and coordinating events beneficial to the students.

In the fall, NSSLHA members assisted the SLP Department in raising over \$3,000 for Autism Speaks and, as a result, Molloy College Speech Team was recognized as a Bronze supporter at the Autism Speaks Recognition Ceremony. Club members participated in the walk, and also sold baked goods and Autism ribbons in order to fundraise for this worthwhile cause. In addition, the SLP department held its annual fall Cocktail Party. NSSLHA was able to raise a generous amount of money for the Rising

Star Scholarship by obtaining numerous donations from neighboring vendors and creating many themed baskets for a silent auction held at the event.

Four NSSLHA members were given the opportunity to travel to Chicago for the 2013 ASHA Convention this past November. The students attended conferences based on their interests and shared wonderful experiences with fellow classmates upon their return!

NSSLHA was excited to host two events that provided more information to the students on campus. The "Communication Sciences and Disorders" event allowed students to ask speech-language pathologists about different work settings and the graduate school process. At the event, representatives from career development and Kaplan test prep were pre-

sent to review resumes and give GRE tips. Professors from local schools were invited to the "Spring Research Event" to present their current research projects. This was an excellent opportunity for students to learn about topics that were of interest to them related to the field.

Creative fundraisers organized by our NSSLHA chapter included two hairchalk events, a crepe & waffle sale, a holiday bake sale, an Origami Owl event, a Valentine's Day lollipop sale, and a pasta sale. Funds raised at these events were donated to Big Laurel Learning Center, Making Strides Breast Cancer walk, Operation Hearts and Home, Petra's Promise, and NSSLHA Loves. Our chapter also sponsored six families during the holiday season through Molloy's "Sponsor-a-Family" event.

Overall, 2013-2014 proved to be a very successful academic year for our club and we expect that next year will be even more fun and exciting!

Continuing Education News

Working together, the Division of Continuing Education and Professional Development, and the Speech-Language Pathology Department continue to plan and provide exciting continuing education programs offered for ASHA CEUs. As an ASHA approved provider of continuing education activities, we have been meeting the needs of professionals from near and far by bringing innovative and engaging speakers to Molloy. Most recently, in the fall of 2013, we were lucky enough to have both Leslie Faye Davis, MS CCC/SLP, NDT Instructor (Emeritus), and Cindy G. Arroyo D.A. CCC-SLP, speak on oral motor and feeding interventions. This presentation was thoroughly enjoyed by a diverse audience which included practicing SLPs, academics and students.

We are also excited about the following upcoming events:

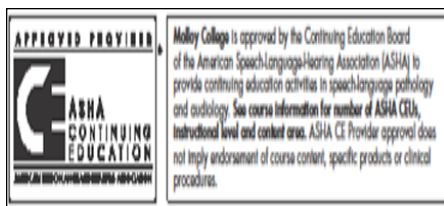
- **Friday, April 25, 2014**
8:15AM -4:00 PM
Current Trends in Evaluating and Treating Dysphagia
Ellen N. Friedman, MA, CCC-SLP is a licensed and ASHA certified Speech-Language Pathologist. Ellen has been a front runner in the relationship of GERD and LPR on voice and swallowing and is published in the fields of GERD and in voice. This presentation will be geared towards speech-language pathologists working in medical settings and will be offered for .6 ASHA CEUs.
- **May 30-June 1, 2014**
9:00 AM – 4:30 PM
Molloy will be hosting:
THE PROMPT INSTITUTE
Presents: Introduction to PROMPT Technique

Further information/registration contact Molloy College's Office of Continuing Education. Online registration is available at www.molloy.edu/ce. Registrations can also be taken by phone at 516-323-3560



Action is the foundational key to all success.

Pablo Picasso



International Travel

Forty-five Molloy College students were accompanied to Poland and the Czech Republic by **Dr. Barbara Schmidt, Dr. Steve Mayo, Dr. Lillian Bozak Deleo, Dr. Chris Van Wei and Dr. Greg Sands**. Among the students, were Speech-Language Pathology undergraduate majors.

The trip was organized by the International Education Office at Molloy College. Traveling to Krakow, Prague and Warsaw, the group combined touring, relaxing (not so much) and learning. A thought provoking trip, students made a visit to the Auschwitz and Birkenau Memorial and Museum, where they contemplated the issues surrounding World War II. Students were able to consider how the frail and disabled were treated at this unimaginable time in history.

In addition to visiting these important memorials, they toured castles, cathedrals and had the opportunity to attend a concert at Lobkowitz Palace in Prague. The Lobkowitz family have preserved numerous historic artifacts, including some original works of Beethoven. Attending a concert in such an opulent palace was a unique experience.

This trip provided a wonderful opportunity to gain a rich knowledge of different cultural perspectives. **Dr. Schmidt** is looking forward to organizing the next trip. Will you be coming?



News And Events

Welcome to our new administrative assistant **Mrs. Elisabet Gardner**. Mrs. Gardner joined the Speech-Language Pathology Department in August 2013 after working in admissions for several years. She brings a dynamic personality and sincere interest in the students to everything she does. We are very fortunate to have her!

In addition to Mrs. Gardner joining the department, we also welcome **Mrs. Christine Callahan Carbone** (BA '96). Mrs. Carbone joined us as a part time administrative assistant in the Speech Language and Hearing Center in April 2014. If you have not met her yet, please stop in the Speech Center and say hello. We know she would love to get to know everyone.

Congratulations to first year graduate student **Lauren Stein!** Lauren, who is a photography buff, entered the SUMMER PIX CONTEST held by the art department in the fall 2013 semester. Her photo reminds us how happy we are that summer is coming!

Nicolette Sinagra (B.S'14) was the recipient of the Rising Star Scholarship for the 2013-14 academic year. This scholarship is awarded to a student who displays excellence in their knowledge of communication sciences and disorders.



Angela Pietrowski was awarded the **Saverio Infante Memorial Scholarship** in 2013-14 in recognition for her dedication, compassion and outstanding academic performance in the masters program.

Dr. Rebekah Bucheri is presenting her research at the May Meeting of the Acoustical Society of American. Her work, done in collaboration with **Dr. W. Strange, Dr. D. Whalen, Dr. Nancy**

McGarr and Dr. L. Raphael examines the influence of speaking mode on the speech of individuals with Parkinson's Disease.

Congratulations to the following seniors who presented their research at the gGraduate Center, CUNY research day :**Nicolette Snagra**: The Effects of Anaerobic and Aerobic Exercise on Free-Memory Word Recall, **Lauren Kiraly**: Homelessness and Subsequent Literacy Ability, **Victoria Bardin**: Idiom Perception and Theory of Mind in Typically Developing Children and Children with Autism



Reflections on Learning

Jenna Seganti, First Year Graduate Student

These decisions we make every-day create experiences that influence who we are and what we do. Throughout my undergraduate career at the University of Florida, observing speech-language pathologists as they assisted individuals to overcome obstacles and achieve their goals was an extremely rewarding experience. Experiences such as these were instrumental in my decision to pursue a career in the field of Speech-Language Pathology. Receiving my acceptance letter to Molloy College's Speech-Language Pathology graduate program meant I was one step closer to achieving my goal. I was awarded the opportunity to apply my knowledge and previous experiences in Molloy's classrooms as well as in the Speech, Language and Hearing Center.

This past year has been quite the adventure. It has been and continues to be a learning experience that requires dedication. In the classroom setting, I have learned an array of information ranging from anatomy and physiology to ethics. We engage in discussion and learn from one another's experiences. My knowledge base has not only expanded but I continue to apply what I have learned in the classroom to my clinical experiences. My experience in Molloy College's Speech, Language and Hearing Center has provided me, as well as other students, with opportunities that will ultimately shape the clinicians we will become. I am now learning the necessary steps to aid individuals in overcoming obstacles and achieve their goals; I am learning to become a clinician.

This spring semester, I was fortunate to have a diverse caseload of clients and work with an array of clinical educators. Working with different clinical educators has aided my growth and development. My skills continue to develop and each of these skills is vital for success in the field of speech-language pathology. I will utilize these skills as I embark on my externship experiences.

Overall, the experiences I have gained in the speech center, along with the background I am provided in the classroom are shaping the clinician I will become and helping me achieve my overall goal of becoming a speech-language pathologist.

Congratulations!

Congratulations to our 2013 graduates of the M.S. Speech-Language Pathology degree program.

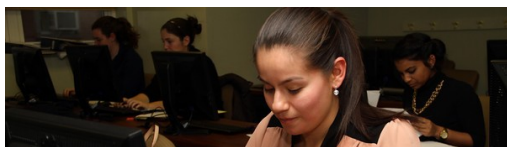
Joan Fox Award

Congratulations to second year graduate student **Christina Ciorciari** who was selected to receive **the Joan Fox Award** from the Long Island Speech-Language-Hearing Association (LISHA). Christina, a Brooklyn College graduate in May 2012, will be receiving her MS degree at the 2014 commencement. She has excelled in her coursework, as well as demonstrating mastery of skills during clinical activities. While

a graduate student she has worked as a graduate assistant in the Speech-Language Pathology Department. The award will be presented by Dr. Schmidt at the May 2014 LISHA awards in recognition for her exemplary work in the discipline.



Highlights



A Look into Jamaica: An Inspirational Medical Mission Trip

By Ashley Myers

Five speech- language pathology first year graduate students (**Ashley Myers, Carey VanBell, Mel Peters, Angie Kim, and Jen Murphy**), supervised by clinic director, **Susan Alimonti**, accompanied Molloy College graduate nursing students and a team of physicians to Jamaica on a medical mission trip to help treat, screen, and serve the local children and adults. This once in a lifetime experience broadened our horizon and opened our eyes to the undetected speech, language, and hearing problems throughout the country and the great need for speech-language pathologists to provide intervention services. In each of the five communities visited, we experienced a great need for educational, medical, and speech and language services. Among the numerous patients we saw over the six clinic days, the following five patients inspired us.

A 16-year-old female diagnosed with cerebral palsy at eight months of age, was incredibly inspirational and had a great support system to care for her. They lived in a remote village, Braes River, and their living situation was an eye opener. They had no electricity, but the family was so grateful for the short time we spent with their daughter. Prior to the diagnosis, she appeared to be typically developing (i.e. babbling and crawling), but soon regressed and is now bed ridden, doesn't attend school or receive services, and is communicatively functioning at an infant level (i.e. eye gaze). To aid in communication between the teenage girl and her mother and sister, we made a communication board so she could express her wants and needs. We also obtained the family's home address and are going to send them more comprehensive materials and information for the girl's mother and sister.

A 13-year-old boy came to Nuttall Hospital with his father. Initially shy and reserved, Jacob's smiling personality brightened the room and was evident throughout the treatment session. Having no formal diagnosis, his father was concerned about Jacob's ability to communicate with his peers. Jacob's father knew his son was atypical, but insisted he had great potential. Jacob proved himself the most intelligent about computers throughout the session; however, strongly resembled an individual with an Autism Spectrum Disorder. This shocked us all, as he had gone through a formal education system for ten years and had never received an evaluation, diagnosis, or services. This experience, along with many others, proved the great need for additional speech-language pathologists in Jamaica.

Three and a half year old twins came to Nuttall Hospital with their parents due to concerns that they weren't communicating and a family history of language disorders. Through an informal play assessment, the twins displayed inadequate eye contact, poor symbolic play skills, and barely interacted with each other. They appeared to be in their own world, as they did not respond to their own names. The twins presented with characteristics that mirrored autism; however, the lack of parental knowledge about speech and language services prevented an evaluation and possible formal diagnosis in the past. We provide the parents with information on ways to stimulate language within the home and important milestones for their children, as well as recommended a full speech, language, and neurological evaluation at the local children's hospital.

A 36-year-old woman came to Immaculate High School for a routine hearing and cognitive/memory screening, but expressed no concerns and no family history. The results of her audiological and tympanometry tests came back normal, but there were some concerns regarding her memory. The General Practitioner Assessment of Cognition Screening Test was administered and the individual had difficulty orienting to time, drawing a clock, and recalling current news stories. She also demonstrated difficulties with short-term memory tasks, as she was unable to recall a name and address given by the clinician. Due to the individual's age, we recommended a full speech, language, and cognitive evaluation at the local hospital and provided strategies to help compensate for her memory loss.

These are only five of the individuals we had the pleasure of serving, but there are over 300 more. Due to the lack of speech and language service in Jamaica, we would like to fundraise for and establish teletherapy sessions with various individuals to allow them the opportunity to receive services and reach their potential. This trip was truly an amazing and inspirational experience.



Seniors Speak



1. What do you think makes Molloy College's SLP educational experience unique?

Molloy's Speech-Language Pathology program has many qualities that make the educational experience unique for each student. The class sizes are small and the staff members are always accessible. The professors are always there for guidance and support, and they have the best interests of each of their students at heart. The privilege to experience clinical practicum is a very unique and valuable experience for undergraduate students. Students at Molloy are able to apply their knowledge as they assume the responsibilities of a student clinician. Students have the opportunity to work with clients and receive professional guidance from their clinical educators. This hands-on experience enables the students to gain insight to the speech-language profession.

Lisa Nappi, Senior Speech-Language Pathology Student

2. Describe your experience at Molloy College as a SLP undergrad.

I believe attending Molloy for my undergraduate degree has provided me with a well-rounded education, unmatched by other programs around. Throughout my four years as a Speech-Language Pathology major, I have had the support of my professors with whom I have been able to develop strong relationships with. All the opportunities I have had during my time at Molloy has ignited my passion for this profession and has allowed me to expand my clinical and leadership skills.

Lauren Kiraly, Senior Speech-Language Pathology Student

3. Do you think Molloy College's undergrad experience has prepared you for the future?

Attending Molloy has made me look forward to my future by making me realize how rewarding our field is. Molloy is the only college on Long Island that exposes their undergraduates to clinic work. This gets the undergraduates at Molloy a complete step ahead than any other college.

Molloy has taught me that learning doesn't only come from what we learn in the classroom but what we do "hands on" and how we reflect and improve from the actions we've taken. We are given the responsibilities of SLPs getting exposure, treating various clients, learning how to adjust our perspective of learning to others and most importantly, recognizing and learning from our mistakes. The professors are critical but are never judgmental of our performance, they provide us insight that allows us to be more informed and aware, to be more open-minded and overall better student clinicians. Molloy has prepared me for my future for these reasons and many more. I suggest attending Molloy because you won't have these experiences anywhere else.

Sami Saad, Senior Speech-Language Pathology Student



Congratulations

Congratulations to the newly elected NSSLHA Board

President- Gabriella Arcabascio

Vice President- Jaclyn Gigante

Secretary- Jaclyn Barcia

Treasurer- Arielle Mayer

Historian - Amanda Zaino

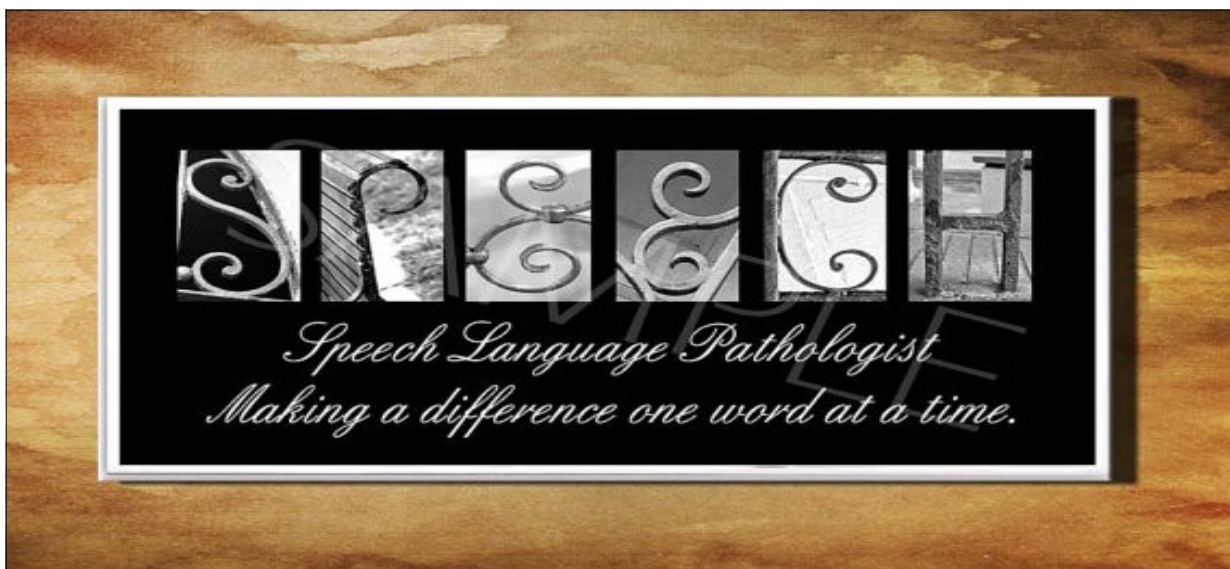
Executive Assistant- Jen Martin



Seniors Class of 2014

FOCUS ON FACULTY

We welcomed Dr. Sandy White to the speech-language pathology department at the beginning of the spring 2014 semester. Dr. White, who earned her M.A. at Hofstra University and her Ph.D. at New York University, worked in the Merrick Public School system for many years. Dr. White, who has a great interest in the relation of disabilities with academic achievement, has done research in the area of fluency. Welcome Dr. White.



Publisher

**Speech-Language
Pathology
Department**

Editor in Chief

Barbara T. Schmidt

Managing Director

Liz Gardner

Contributors

**Susan Alimonti
Dianne Geneva
Lauren Kiraly
Ashley Meyers
Jenna Seganti**

**Speech-Language
Pathology
Department**

Molloy College
1000 Hempstead Avenue
Rockville Centre, NY
11570

Tel.516.323.3518



*Become a fan of Molloy College Speech
Pathology and Molloy College Speech,
Language and Hearing Center*

